

Teeth Bleaching System

MD-666
User manual

Teeth Bleaching System
MD-666



Catalogue

1. Safety.....	2
2. Assembly Instruction Illustration.....	3
3. Product Features.....	5
4. Product Specification.....	5
5. Content.....	6
6. Operation.....	6
7. Liability.....	8
8. Warranty.....	8

Safety**PLEASE NOTE**

Prior to installation and start-up of the unit, carefully read the instructions provided herein. As with all technical devices, the proper function and safe operation of this unit depend on the user's compliance with the safety recommendations presented in these operating instructions.

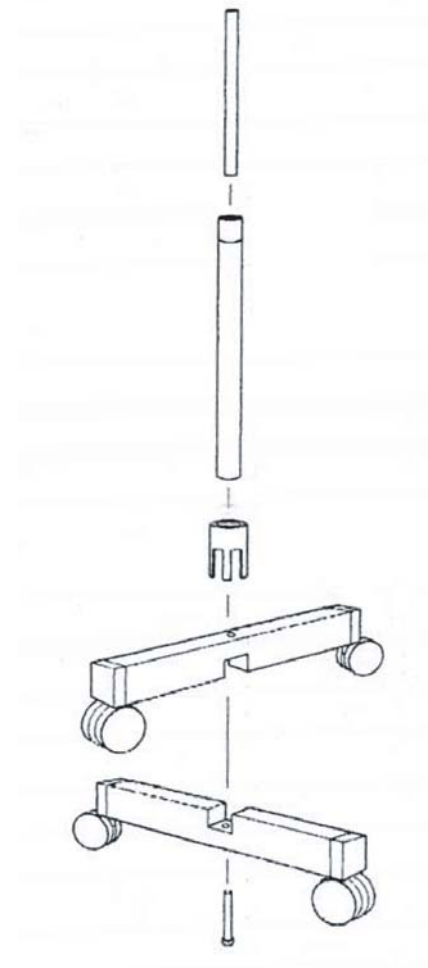
⚠ CAUTION: It is important to observe the following precautions and procedures:

Do not shine the light directly onto or toward unprotected gingival or skin.

⚠ CAUTION: Persons with a history of photosensitivity or who are using photosensitizing drugs should not be exposed to light from this unit.

⚠ CAUTION: This equipment is not suitable for use in the presence of flammable anesthetic mixtures with air or nitrous oxide.

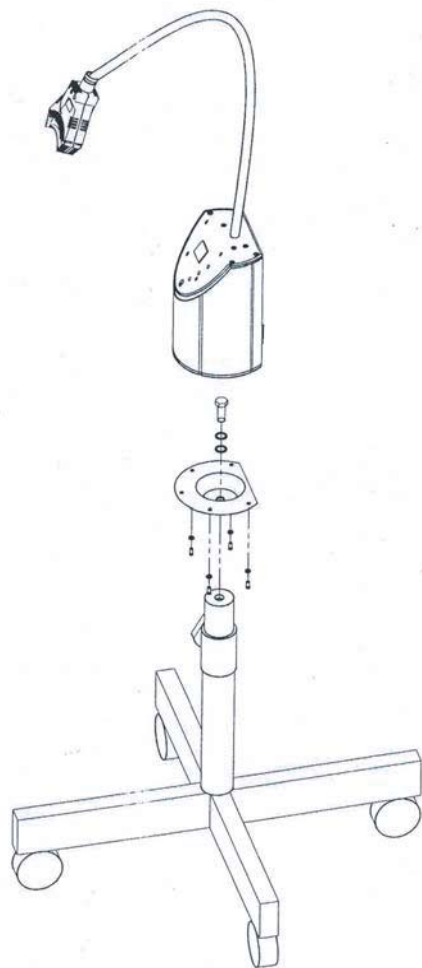
⚠ CAUTION: Do not look directly at the light emitted from this bleaching unit.

Assembly Instruction Illustration**(1)**

⚠ Warning:
When this screw is loose, the spring will be spring out

Assembly Instruction Illustration

(2)



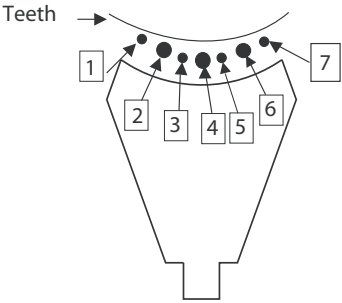
Product Features

- WHITENING set fitted with: .large whitening. illuminator, a base and flexible arm.
- Combination of high power BLUE led.
- Tunable bleaching time with microprocessor-controlled timer presets.
- Digital indicator with audio feedback.
- Quiet fan operation
- Smart auto-select power: 100 to 240 Volts AC.50/60 HZ for global use.
- High Speed Multi-Arch Teeth Whitening System.
- Small base size design, suitable use in dental clinic
- Easily to clean.
- High Uniformity of Light Output

Product Specifications

- Broad Spectrum: 430nm ~ 490nm & 395nm ~ 415nm
- Light Output power: Up to 2000 mW/cm2
- 100/240 Volt, 50/60 Hz
- Weight: 3.9 Kg
- Max. Working Radius: 38 cm
- High Uniformity of Light Output:

Distance between Teeth and Illuminator(mm)	Uniformity (Point 1to Point 5)
1	Above 80%
3	Above 80%
5	Above 80%
10	Above 80%



Content

MD-666	x 1
Power Code	x 1
Glass	x 2
Sheath	x 20
User manual	x 1

Operation

Turn on the Teeth Whitening Accelerator:

- Plug in the Teeth Whitening Accelerator.
- Turn on the power switch

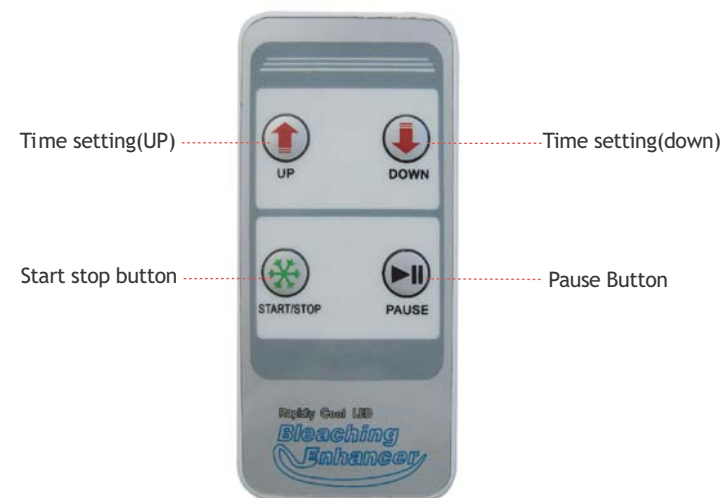
Power Switch

Operating the Teeth Whitening Accelerator:

- Power Button:** Turn on/off the light by pressing the .Power. button.
- Pause Button:** Stop the time counting and emitting light by pressing the .Pause. button.
The remaining whitening time will sparkle on the .Digital Indicator..
Press the .Pause. button again, light will emit and time will count continua
- Setting Button:** Use .Setting. button to set whitening time.
1 minute counting with memory, the longest whitening time is 20 minutes each cycle



Remote control manual



Sound Warning

- a.) When you press any button, you will hear a beep.
- b.) When whitening time remains 30 seconds, you will hear three beeps.

Cooling Setting

To ensure all of the led can work at the normal temperature during the whitening process, there is a quiet and high efficient fan in the Illuminator to expel the heat.

Anytime, once you press the "Power" button to turn off light, the fan won't shut down until 2 minutes.

Liability

It is responsible for the effects on safety, reliability and performance of this product only if:

- The electrical installation of the relevant room complies with the requirements.
- The equipment is used in accordance with these instructions for use.