

*image maker*



**sopix**<sup>®</sup>

X-ray without the X-tra work!

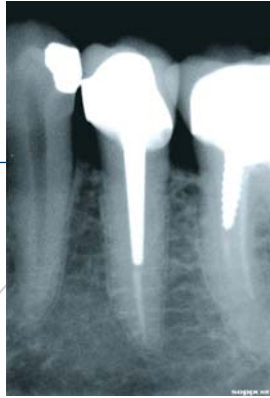




## Sopix sensors

### High-definition X-rays

Thanks to the use of CCD sensors, the Sopix radiology systems offer high-precision images with high contrast necessary to perform your diagnosis.



60ms



100ms



200ms

*Pictures taken with an X-Mind DC, 70kV, 8mA type generator.*



### Reliability above all

The sensors have a 100,000-image working life, and the cable is specially strengthened in its most active part to avoid any break.

### Sensors available in Size 1 and Size 2

Two sensor sizes are available.

Size 1, usually used in vertical position, enables to take radiographies from 1 to 3 teeth.

Size 2 is recommended for horizontal use, as for example, bitewing-type radiographies.





## The reference product!

Today, the USB technology is known and used by everybody, which is the reason why Sopix USB is available in USB 2.0 connection, compatible with USB 1.1.

*Self-powered thanks to  
its USB cable*

Easy to install,  
Sopix directly connects to your computer,  
with no need of external power.



*Always ready*

Sopix is always ready to receive X-rays.  
This means that you do not have to perform  
any software or hardware operation before or after  
acquiring each image.

*Hot plug and play technology*

Interchange the different-size sensors, without caring about configuring the system.  
Sopix instantly identifies the used sensor and immediately adapts!





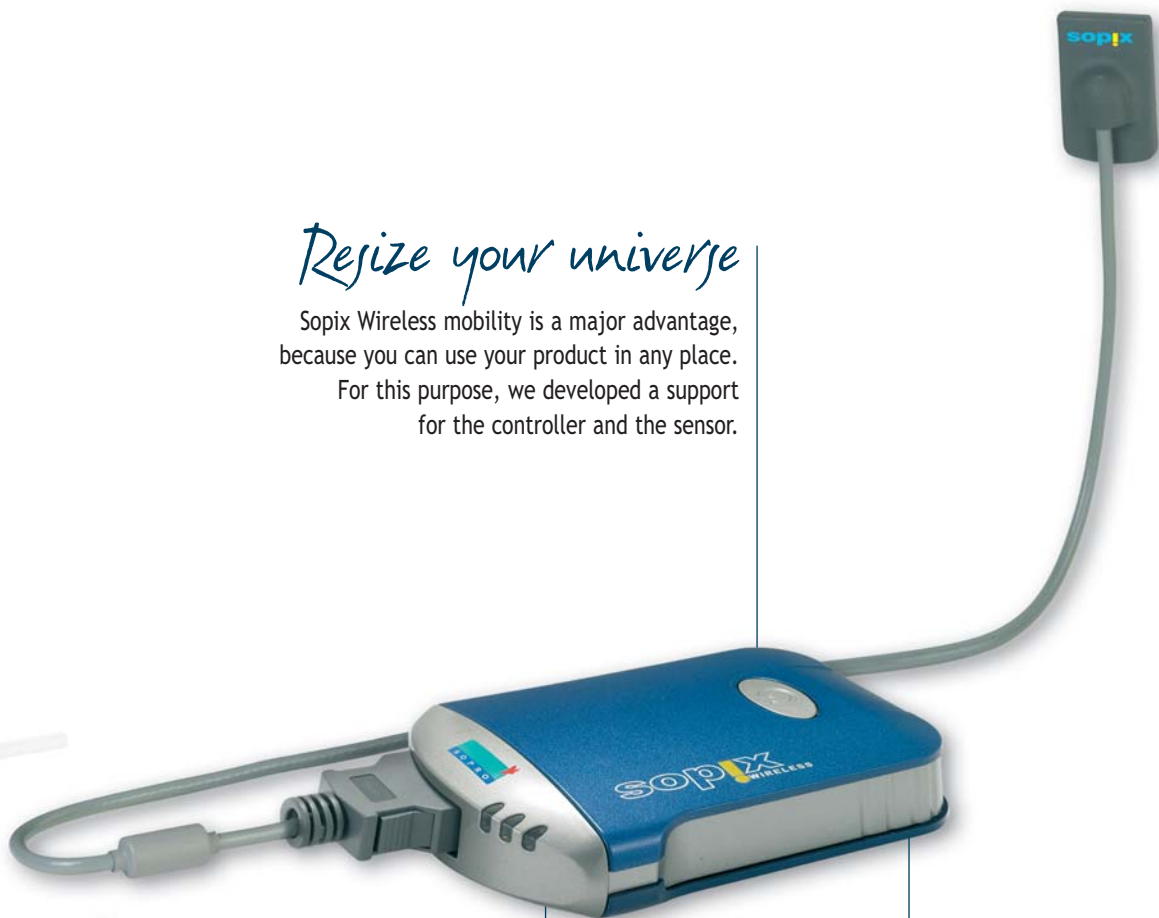
## Expand your world!

Thanks to its size and weight (170gr), Sopix Wireless offers total freedom of movement. It is the ideal concept for multi-op utilization!

### *Resize your universe*

Sopix Wireless mobility is a major advantage, because you can use your product in any place.

For this purpose, we developed a support for the controller and the sensor.



### *Bluetooth<sup>®</sup>, cutting edge technology*

Bluetooth<sup>®</sup> works on 2.4 GHz band and uses 79 different frequencies. Bluetooth<sup>®</sup> is the most economical in terms of energy consumption.

The other advantage of Bluetooth<sup>®</sup> is the ability to connect peripherals within a radius of ten or so metres without worrying about direction.

### *Recharging Sopix Wireless*

Just as your mobile telephone, Sopix Wireless easily recharges. Its autonomy enables to make up to 200 images with only one charge.

# Technology and software

## *A unique technology*

Thanks to the E.C.S technology (Exposure Control System) exclusively developed by Sopro, and unique on the market, Sopix compensates for over and under exposures during each acquisition, even when exposure times are very short. Thus, you only have to set the timer once for the whole images.

ECS



## *Precision and execution rate*

Sopix integrates a DSP 32-bit processor that offers 4096 grey levels in order to offer a better contrast.

## *Fully automated*

The Sopix controller incorporates an illuminated signage system informing you of the system status at any time (available, acquisition in progress, etc.). Signage is simultaneously displayed on screen, and enables to orient the image before exposure so that the images are always facing the right way.

## *TWAIN standard*

Sopix's drivers are compatible with the international standard TWAIN so as to work with all the imaging software under this standard.

**SOPRO**  
imaging

## *User-friendly software adapting to any need*

Sopro Imaging is very successful among practitioners, for it is very appreciated for its easy use. Updating is free and automatically performs via Internet!



Do you want Sopro Imaging to be linked to your business software running in network with the other practice stations? Thanks to its numerous binding possibilities Sopro Imaging meets all your needs.





X-ray generator



Digital radiology

SOPRO imaging



Imaging software

SOPRO 717



Intra-oral camera



## Technical specifications

### Sensors

Technology .....	CCD with scintillator
True resolution .....	20 pl/mm
Theoretical resolution .....	22.7 pl/mm
Working life .....	100,000 images (exposure time 100ms)
Pixel size .....	22µm x 22µm
Cable length for the SOPIX USB.....	2 meters
Cable length for the SOPIX WIRELESS .....	0.9 meters

### Sensor size 1

External dimensions .....	25 x 39.5mm
Active surface area .....	600 mm <sup>2</sup> (20 x 30mm)
Number of pixels .....	1.25 million

### Sensor size 2

External dimensions .....	32 x 42.5mm
Active surface area .....	990 mm <sup>2</sup> (27.50 x 36.08mm)
Number of pixel .....	2.05 millions

### Controller



Technology .....	DSP 32 Bits
Connection.....	USB 1.1 and USB 2.0
Image acquisition .....	4096 grey levels
USB cable length .....	5 meters
Provided imaging software .....	Sopro Imaging

### Minimum configuration required for the SOPIX USB

Pentium III - 500 Mhz  
 256 Mo RAM  
 20 Go hard disk  
 2 free USB ports  
 Operating system: Windows 98 SE, 2000 Pro SP4, XP Pro SP1, VISTA 32 SP1  
 Graphic card 32 Mo RAM  
 USB chipset: Intel or NEC  
 Screen resolution: 1024 x 768

### Controller



Technology .....	DSP 32 Bits
Connection.....	Binding without 1.1 class 2 bluetooth cable
Power supply .....	4 AAA-TYPE NIMH accumulators
Charging time.....	1h45
Image acquisition .....	4096 grey levels
Provided imaging software .....	Sopro Imaging

### Minimum configuration required for the SOPIX WIRELESS

Pentium IV - 1,3 Ghz  
 512 Mo de RAM  
 20 Go hard disk  
 2 free USB ports  
 Operating system: Windows XP Pro SP2, VISTA 32 SP1 or VISTA 64  
 Graphic card 32 Mo RAM  
 USB chipset: Intel or NEC  
 Screen resolution: 1024 x 768

